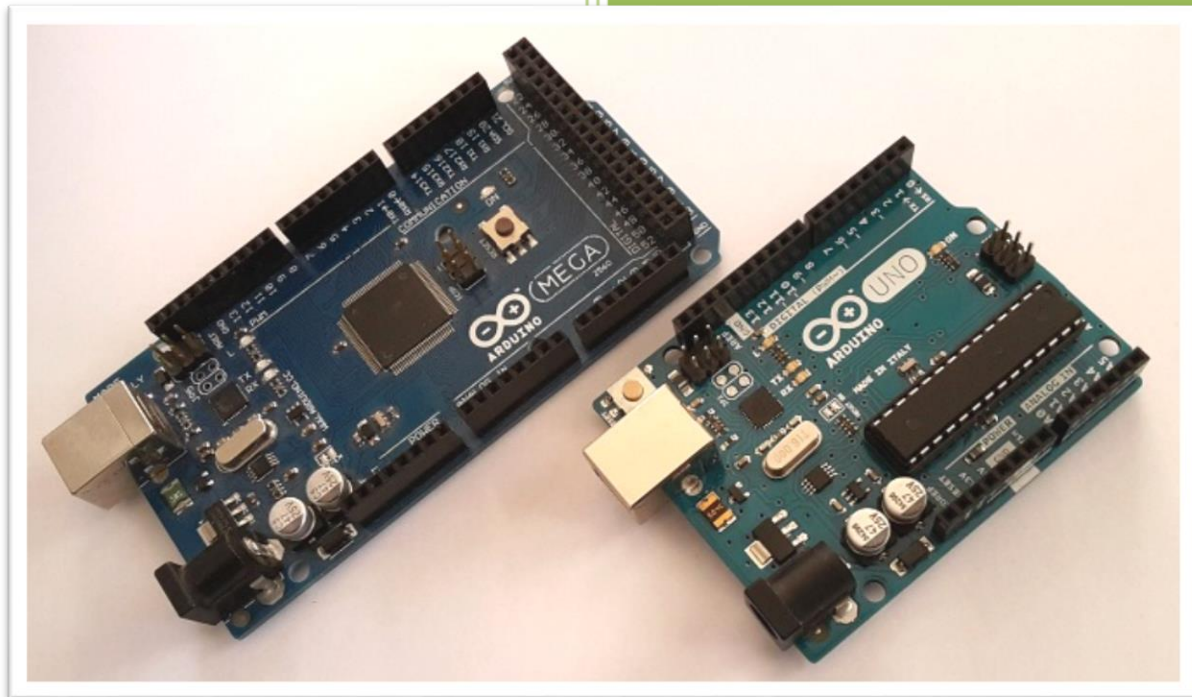


# Using Arduino Boards in Atmel Studio 7



Sepehr Naimi

NicerLand.com

2/20/2021

## Contents

Introduction.....	3
Installing Atmel Studio and Making the First Project .....	3
Downloading Avrdude.....	3
Checking COM Port.....	4
Opening the Atmel Studio and using avrdude .....	5
Making a Project .....	7
Programming the Arduino Board.....	9
The IC pins.....	10
References .....	10

## Introduction

There are various hardware tools to program Atmel microcontrollers. But if the chips have bootloaders, they can be programmed using serial ports without needing to use any hardware tools. Bootloader is small software which gets the program through the serial port and programs the IC chip.

The microcontrollers of Arduino boards have boot loaders. As a result, you can connect them to the PC and use them as an AVR trainer board. The document teaches you to use Arduino Trainer boards in Atmel Studio.

You can also burn the boot loader on a new chip and make your own trainer board. But to program the boot loader onto the new chip you need a programmer.

## Installing Atmel Studio and Making the First Project

To install Atmel Studio and make the first project, read one of the following documents:

[\*Assembly Programming in Atmel Studio 7.0 step by step tutorial\*](#)

[\*C programming in Atmel Studio 7 step by step tutorial\*](#)

## Downloading Avrdude

1. To program Arduino boards you need *Avrdude*. Download Avrdude from our website:

[https://NicerLand.com/eduFiles/AVR/Software/avrdude\\_5\\_11.zip](https://NicerLand.com/eduFiles/AVR/Software/avrdude_5_11.zip)

- a. Alternatively, you can download Avrdude from the following website:

<http://savannah.nongnu.org/projects/avrdude>

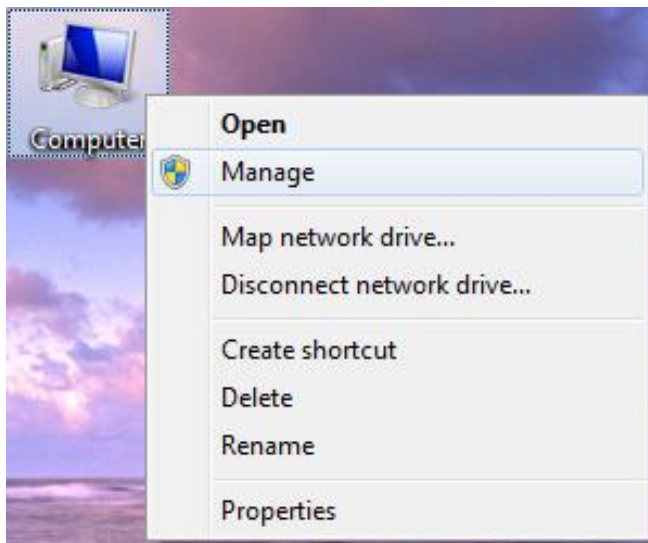
### Note

If you already have the Arduino IDE on your PC, the avrdude.exe file is located in  
C:\Program Files (x86)\Arduino\hardware\tools\avr\bin\avrdude.exe  
and avrdude.conf is in  
C:\Program Files (x86)\Arduino\hardware\tools\avr\etc\avrdude.conf

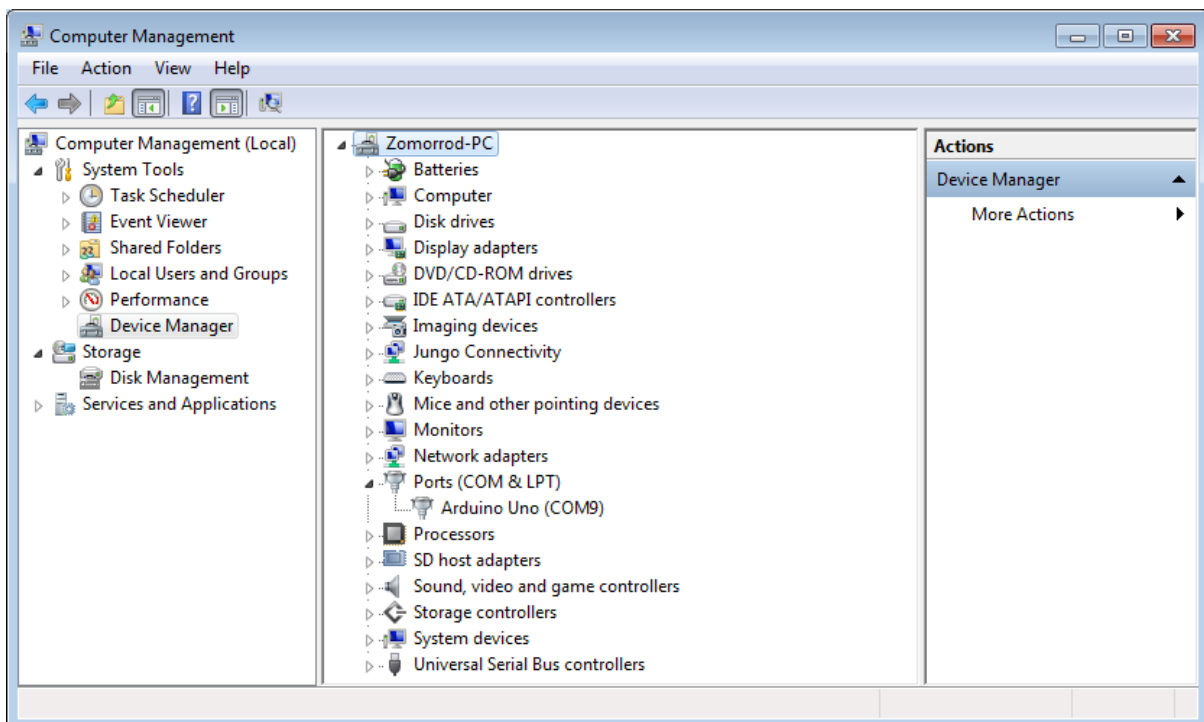
2. Unzip the downloaded file, rename the directory to **avrdude**, and copy it into your **C** drive.

## Checking COM Port

1. Using a USB cable, connect the Arduino board to your PC.
2. Right click on the **Computer** icon and choose **Manage**.

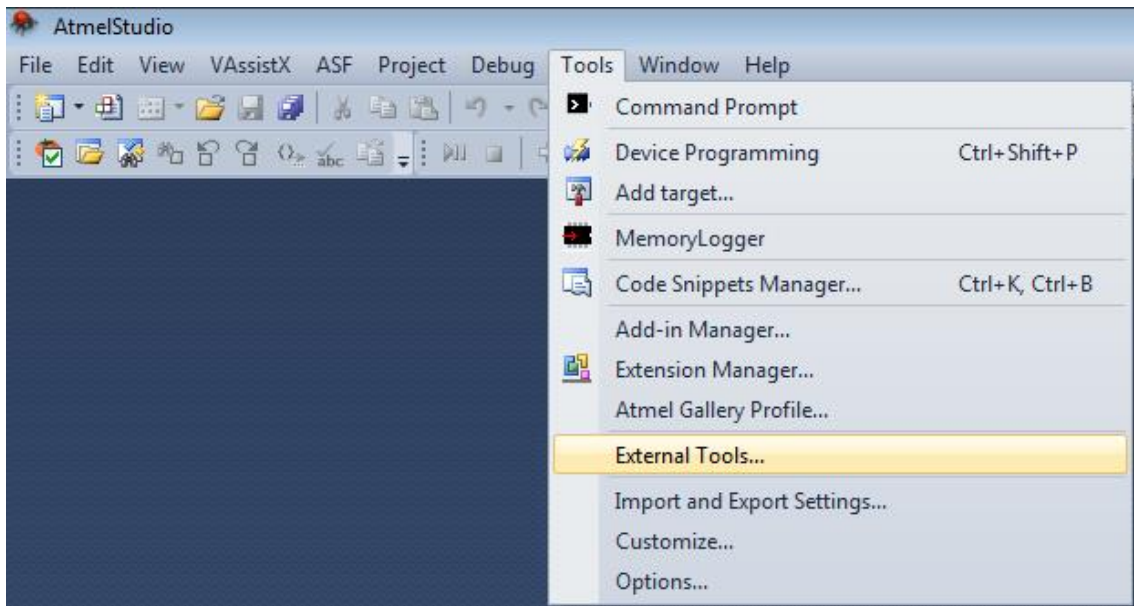


3. Click on **Device Manager** and then **Ports (COM & LPT)**. Check the **COM** port of the Arduino board.

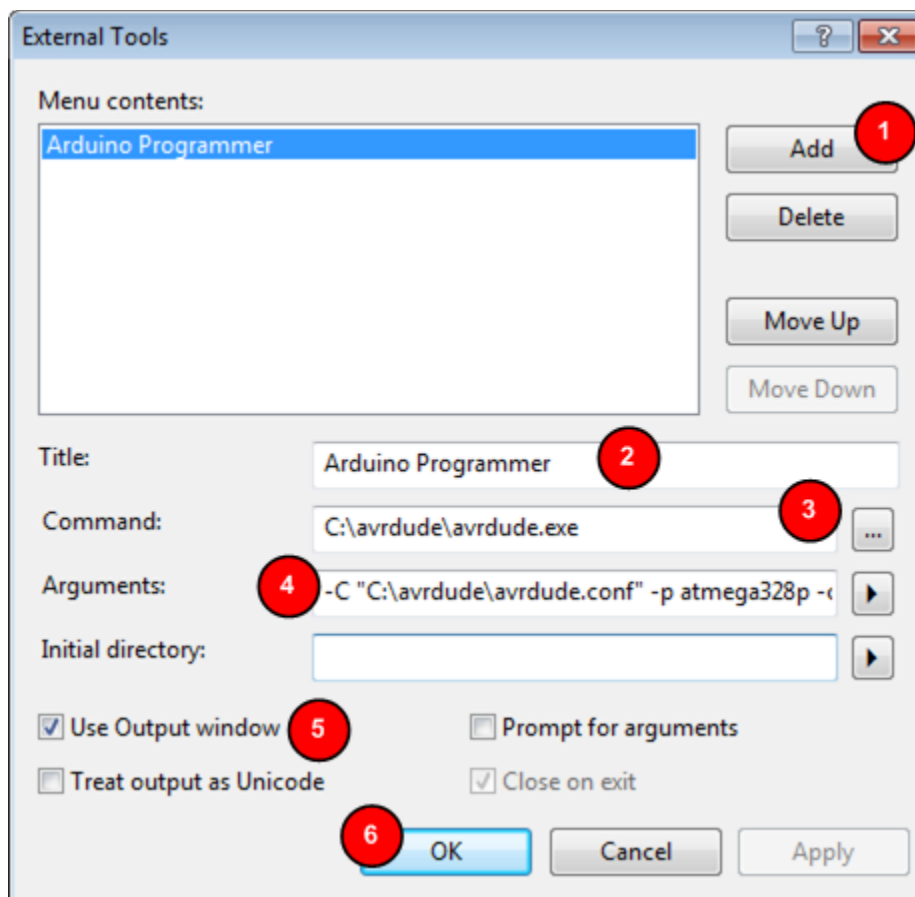


## Opening the Atmel Studio and using avrdude

4. Open the **Atmel Studio** IDE.
5. Go to the **Tools** menu and choose **External Tools...** .



6. In the **External Tools** dialog:
  - a. Press the Add Button.
  - b. Name it as **Arduino Programmer**.



- c. Type the following address next to the **Command**:

**C:\avrdude\avrdude.exe**

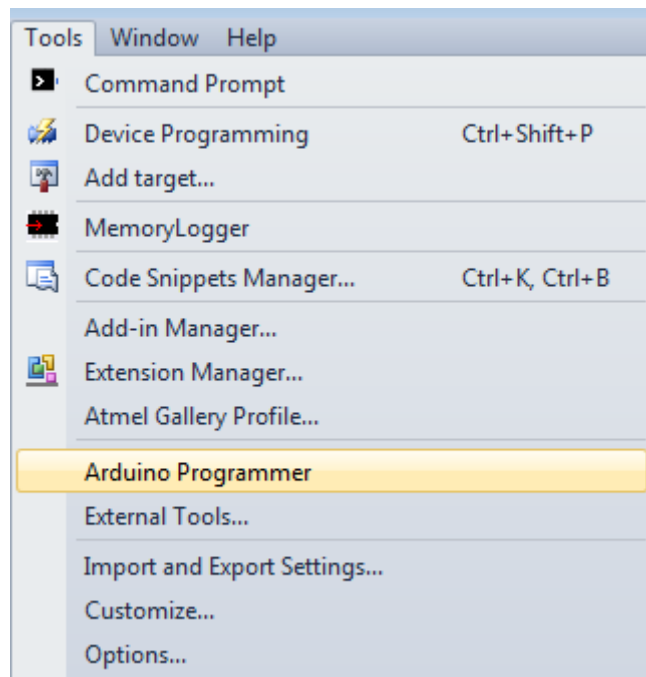
- d. Avrdude needs the following arguments: **avrdude.conf** file, the microcontroller part number, the COM port, the serial baud rate and the hex file to be programmed. To program Arduino UNO board, type the following line in the **Arguments** textbox and change **COM9** according to your port:

`-C "C:\avrdude\avrdude.conf" -p atmega328p -c arduino -P COM9 -b 115200 -U flash:w:"$(ProjectDir)Debug\$(TargetName).hex":i`

<b>Note</b>	
If you want to program Arduino Pro Mini or Mega2560, use the following arguments instead:	
Board	Arguments
Arduino Pro Mini	<code>-C "C:\avrdude\avrdude.conf" -p atmega328p -c arduino -P COM9 -b 57600 -U flash:w:"\$(ProjectDir)Debug\\$(TargetName).hex":i</code>
Arduino Mega2560	<code>-C "C:\avrdude\avrdude.conf" -p atmega2560 -c wiring -P COM9 -b 115200 -U flash:w:"\$(ProjectDir)Debug\\$(TargetName).hex":i</code>

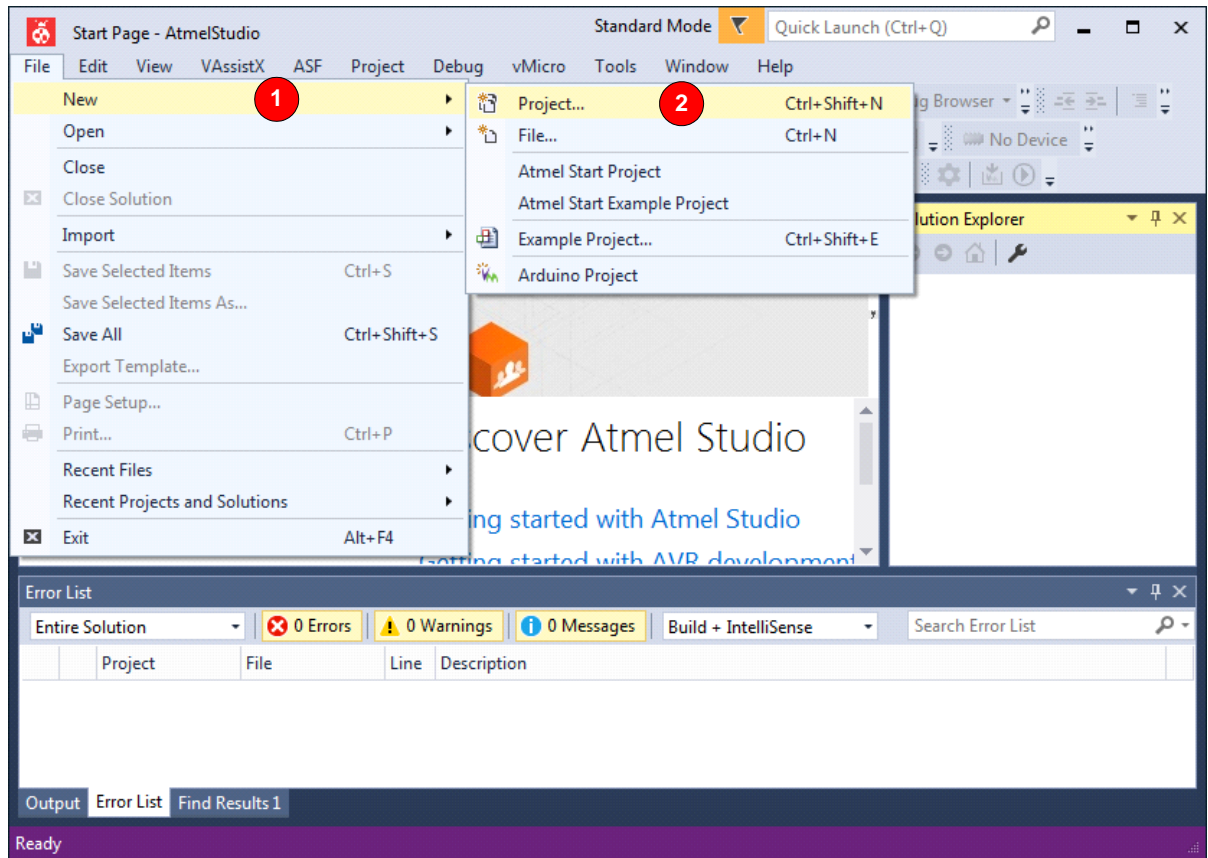
- e. Tick "**Use Output window**".  
f. Press **OK**.

7. Go to the **Tools** menu again. **Arduino Programmer** should be added to the **Tools** menu.

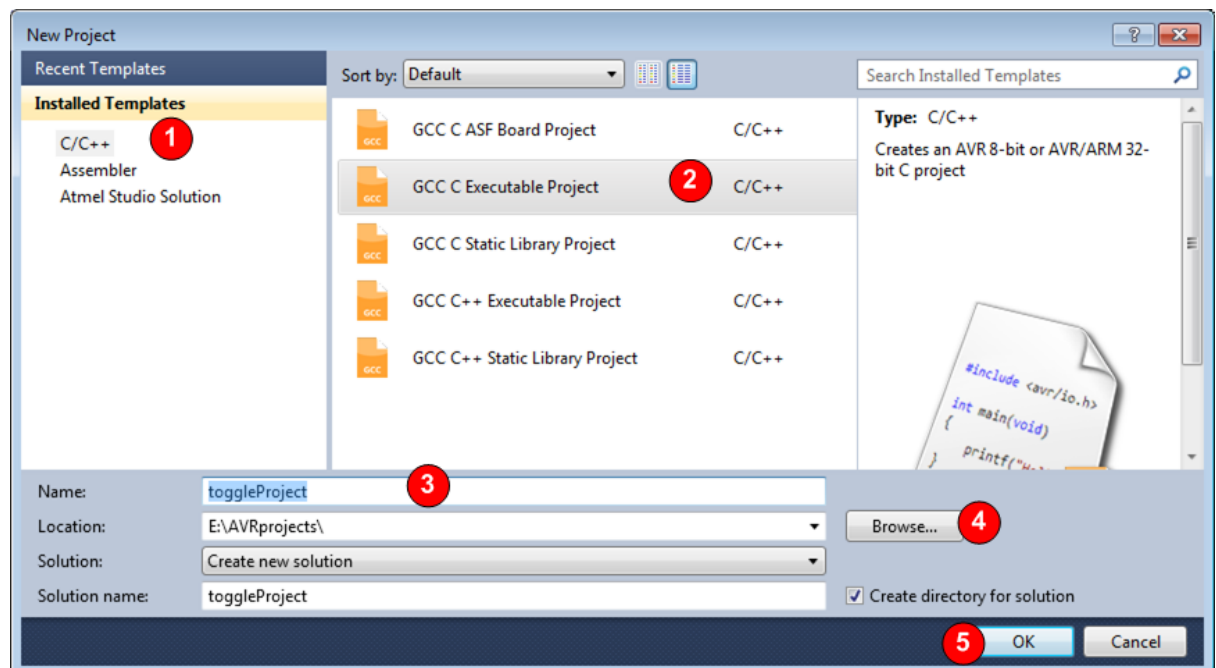


## Making a Project

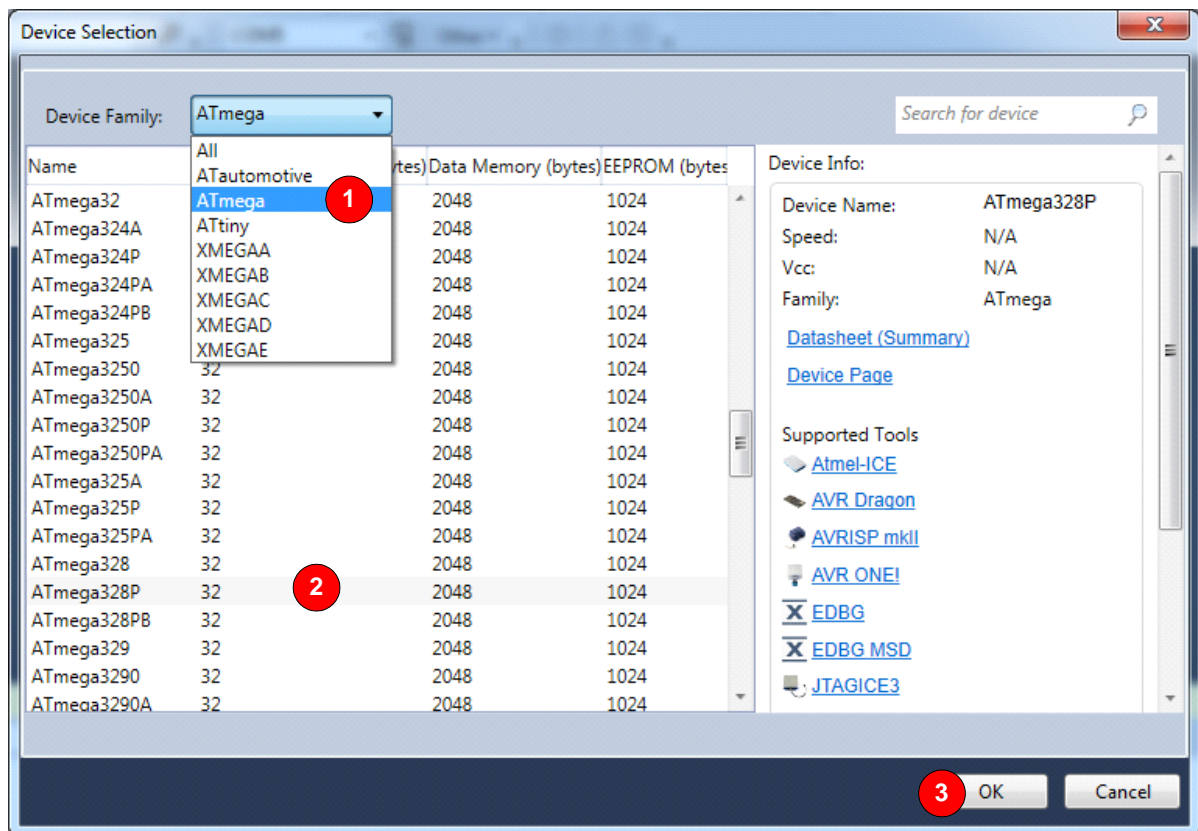
8. Go to the **File** menu. Click on **New** and then **Project**.



9. Choose **GCC C Executable Project** and name the project as **toggleProject**. Then press **OK**.



10. Choose **ATmega328P** from the list and press **OK**.



11. Type the following program.

```
/*
 * toggleProgram.c
 *
 * This program toggles ports B and C.
 *
 * Created: 4/3/2015 4:43:51 PM
 * Author: Naimi
 */

#include <avr/io.h>

#define F_CPU 16000000UL
#include "util/delay.h"

int main(void)
{
    DDRB = 0xFF;
    DDRC = 0xFF;

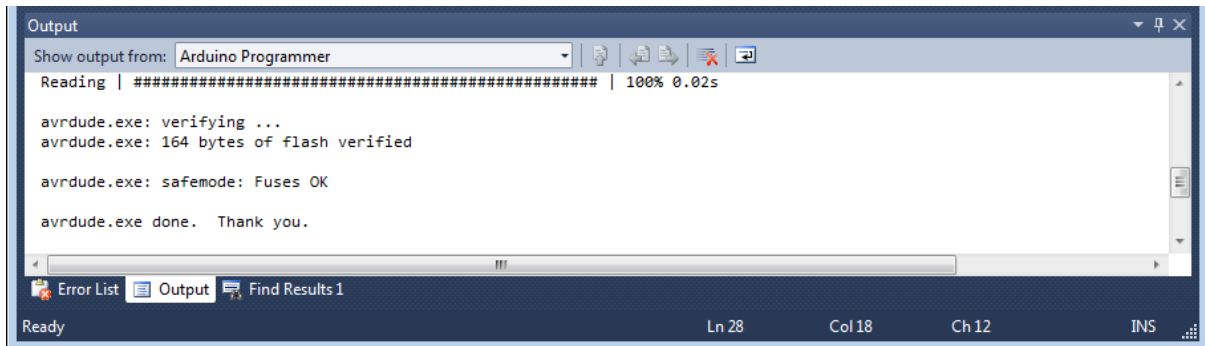
    while(1) //loop forever
    {
        PORTB ^= 0xFF; //toggle port B
        PORTC ^= 0xFF; //toggle port C

        _delay_ms(1000); //wait 1 second
    }
}
```



## Programming the Arduino Board

12. Connect your Arduino board to the PC.
13. Go to the **Tools** menu, and click on **Arduino Programmer**. The following texts appear in the **Output** window and the L LED starts blinking on the board.



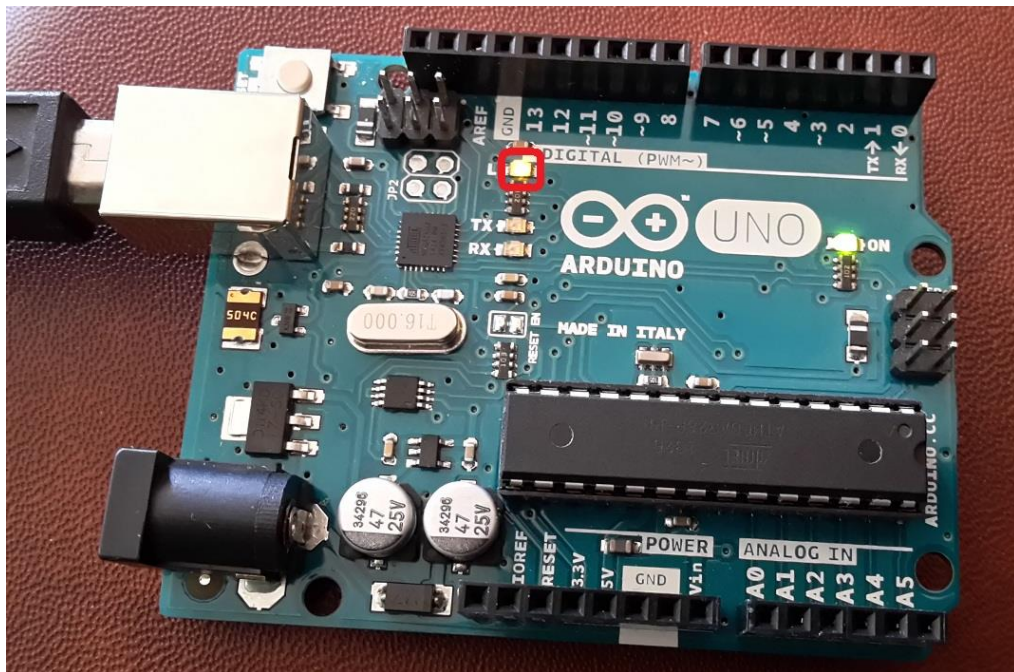
```
Output
Show output from: Arduino Programmer
Reading | ##### | 100% 0.02s

avrdude.exe: verifying ...
avrdude.exe: 164 bytes of flash verified

avrdude.exe: safemode: Fuses OK

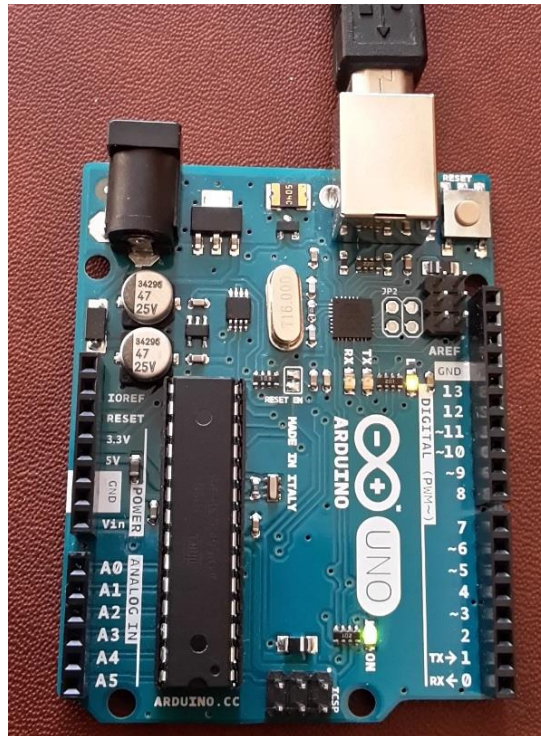
avrdude.exe done. Thank you.
```

Ready Ln 28 Col 18 Ch 12 INS



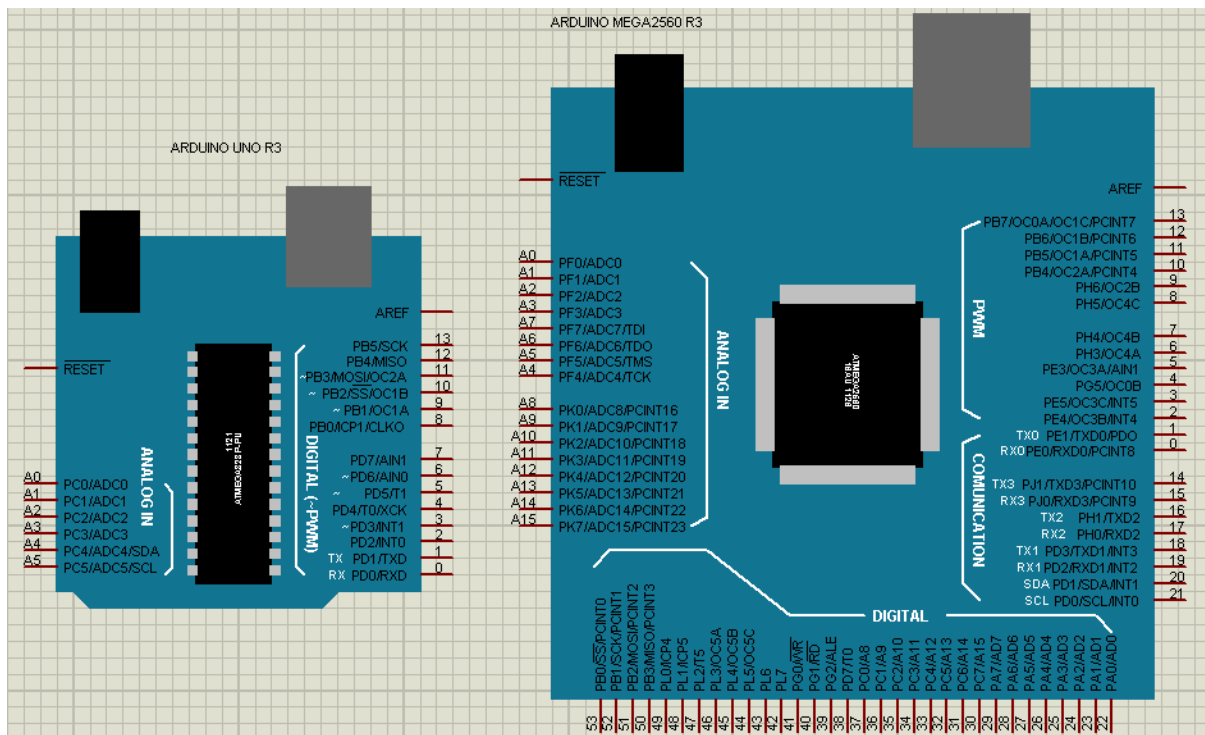
## The IC pins

The following picture shows the Arduino UNO board together with the Atmega328 pins.



Label	Port
A0	PC0(ADC0)
A1	PC1(ADC1)
A2	PC2(ADC2)
A3	PC3(ADC3)
A4	PC4(ADC4)
A5	PC5(ADC5)

Label	Port
SCL	PC5(ADC5/SCL)
SDA	PC4(ADC4/SDA)
AREF	AREF
GND	GND
13	PB5(SCK)
12	PB4(MISO)
11	PB3(MOSI)
10	PB2(OC1B)
9	PB1(OC1A)
8	PB0
7	PD7
6	PD6
5	PD5
4	PD4
3	PD3(INT1)
2	PD2(INT0)
1	PD1(TXD)
0	PD0(RXD)



## References

<http://www.atmel.com/>

<http://www.nongnu.org/avrduide/>